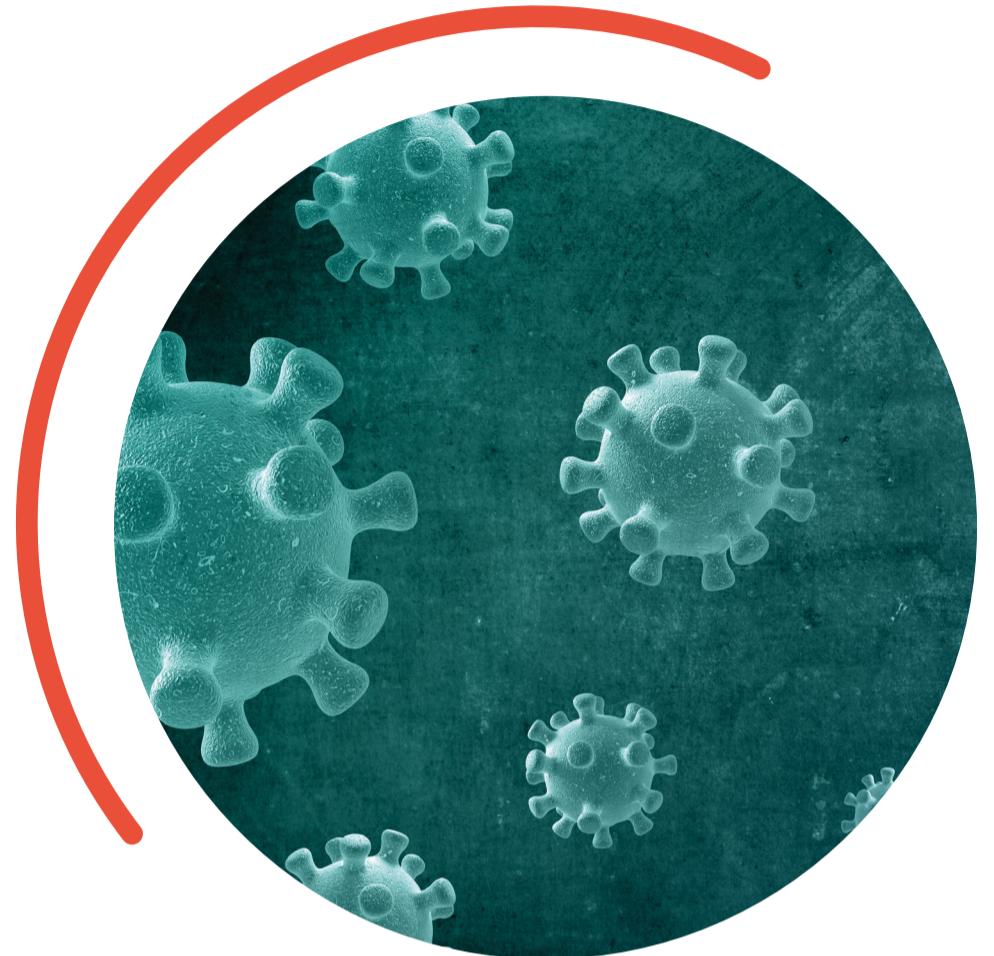


# From COVID-19 to long COVID and pandemic preparedness



The event will include three main sessions covering the impacts of COVID-19, markers and mechanisms of Long COVID, and pandemic preparedness. Speakers will include representatives from Research Luxembourg, international experts, and CoVaLux investigators.

The full agenda is available on



## DATE & PLACE\*

 14 & 15 November |  Belval, Maison du Savoir (3.330)

 2-half-day event: Thursday afternoon + Friday morning

\* Mandatory registration, please visit

